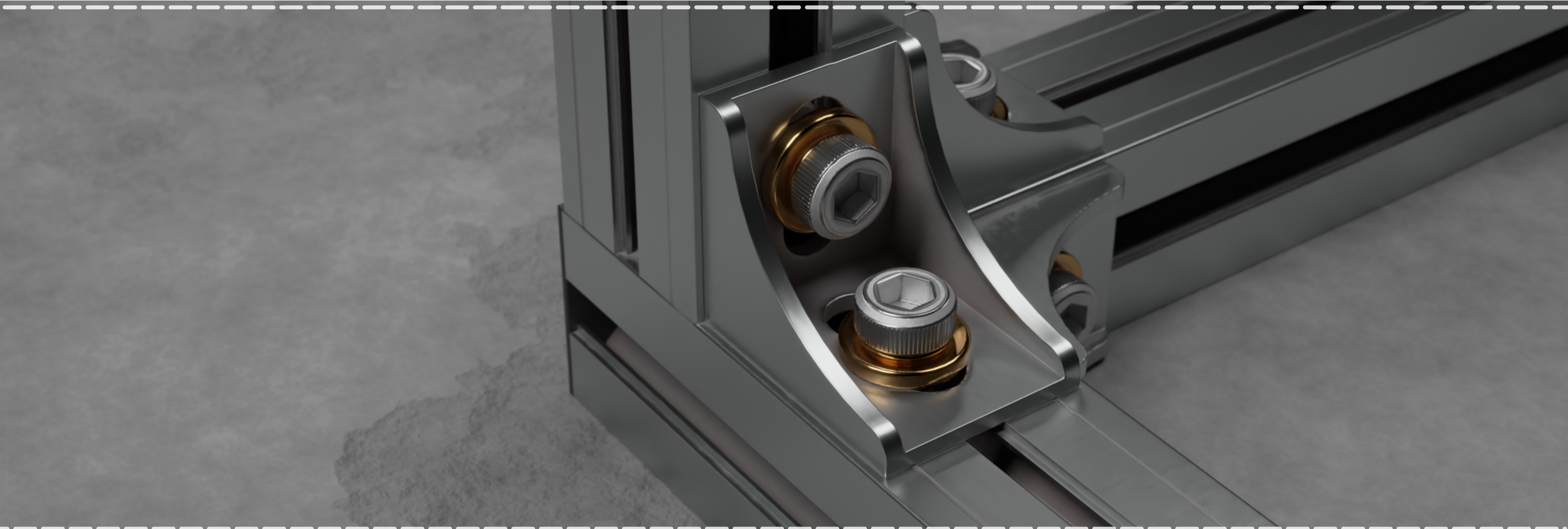


Mekaltekte, müşterilerin özel ihtiyaçlarına yönelik ürün tasarımı ve kalıp imalatında uzmanlaşmıştır. Mekaltek, özel makine ve ekipmanlarını kullanarak AA 6005, 6060, 6061, 6063, 6082 alaşımlarıyla üretim yapma kapasitesine sahiptir, bu da farklı alaşım taleplerine hızlı ve etkili bir şekilde yanıt verebilme yeteneği sağlar.

Mekaltek specializes in product design and mold manufacturing tailored to the specific needs of customers. With its special machinery and equipment, Mekaltek has the capacity to produce with AA 6005, 6060, 6061, 6063, 6082 alloys, enabling it to respond quickly and effectively to different alloy requirements.





Profil Kodu	RESİM	TANIM	KANAL (mm)	kg/mm
MKL3200		90x30	8	2,263
MKL3201		90x45	10	2,569
MKL3202		90x90	10	5,447
MKL3203		60x30	8	1,523
MKL3204		60x45	10	2,488
MKL3205		90x45(H)	10	2,035
MKL3206		45x45	10	1,588
MKL3207		30x30	8	0,864
MKL3208		20x20	6	0,39
MKL3209		40x40(H)	10	1,146
MKL3210		80x40 3K	10	2,068
MKL3211		40x40 2K	10	1,295
MKL3212		45x45(H)	10	1,16
MKL3213		78x45	10	3,467
MKL3214		45x45(A)	10	2,092
MKL3215		35x35	8	0,965

Profil Kodu	RESİM	TANIM	KANAL (mm)	kg/mm
MKL3216		45x45 2K	10	1,547
MKL3217		80x40(A)	8	3,237
MKL3218		40x40(A)	8	1,984
MKL3219		60x60	8	3
MKL3220		50x50	10	2,599
MKL3221		80x40(H)	10	1,957
MKL3222		180x45	10	6,558
MKL3223		100x50	10	4,558
MKL3224		25x25	6	0,575
MKL3225		80x80	8	5,32
MKL3226		100x100	10	6,913
MKL3227		135x90	10	9,149
MKL3228		90x45 3K	10	2,802
MKL3229		30x30(H)	8	0,78
MKL3230		40x40(A)	10	1,661



Profil Kodu	RESİM	TANIM	KANAL (mm)	kg/mm	Profil Kodu	RESİM	TANIM	KANAL (mm)	kg/mm
MKL3231		24.9x24.8		0,634	MKL3246		55x55		1,572
MKL3232		25x25		0,792	MKL3247		80x40		2,981
MKL3233		32x32		0,87	MKL3248		90x45		3,138
MKL3234		40x40		1,694	MKL3249		90x45		3,19
MKL3235		39.9x39.9		2,5	MKL3250		90x45		2,393
MKL3236		30x30		0,93	MKL3251		65x65		4,165
MKL3237		40x40		0,987	MKL3252		40x40		0,892
MKL3238		40x40,2		0,84	MKL3253		54x23.4		0,607
MKL3239		40x40		0,81	MKL3254		90x90		5,247
MKL3240		40.5x40.5		1,008	MKL3255		40x28		0,66
MKL3241		45x45		1,442	MKL3256		24.8x24.8		0,34
MKL3242		45x45		2	MKL3257		75x80		1,355
MKL3243		45x45		1,984	MKL3258		78.5x87		3,035
MKL3244		45x45		1,436	MKL3259		80x80		2,88
MKL3245		45x45		1,545	MKL3260		58x58		1,505